

**Each day, children with hearing loss
attend early childhood programs...**



How will we identify who they are?





Why continuous screening?

- ◆ Loss to follow-up/ documentation from newborn screening
- ◆ Late on-set and progressive hearing loss
- ◆ Incidence of permanent, sensori-neural hearing loss doubles by school age years

Where?

- ◆ Health care settings
- ◆ Part C/ EI programs
- ◆ Head Start programs

Kidshearing.org

Hearing Screening in Head Start

Requirement:

Every child screened within 45 days

Methodology: NOT DEFINED

Currently use methods:



- ◆ Newborn hearing screening results
- ◆ Parent perceptions of hearing
- ◆ Startle tests
- ◆ Health care provider exam reports
- ◆ OAE and audiometry



Overview of Head Start

Purpose: Comprehensive program addressing educational, health, nutritional, social and other needs of children & families

Eligibility: Economic / below poverty line

Program types:

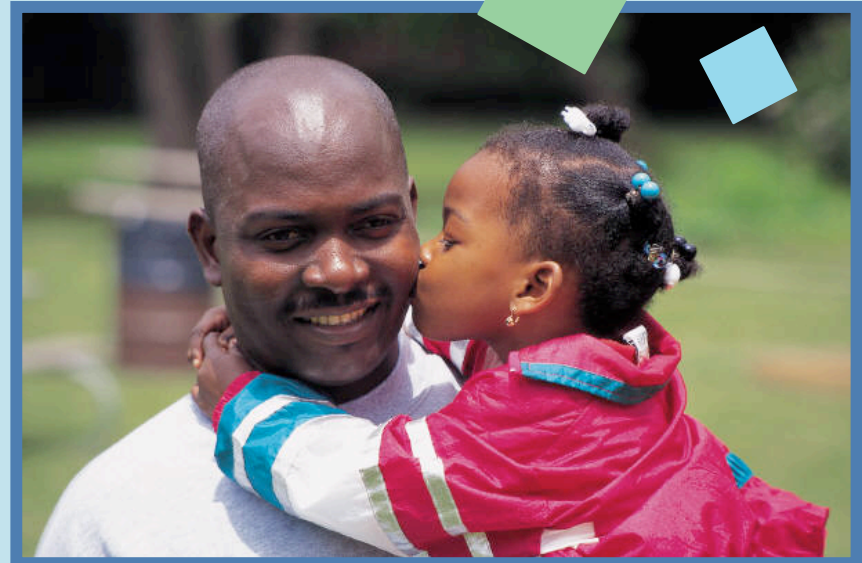
- ◆ Early Head Start
- ◆ Head Start
- ◆ Migrant Head Start
- ◆ American Indian/Alaska Native Head Start



Overview of Head Start

Head Start Facts

- ◆ 1 million children
- ◆ Every state
- ◆ More 18,000 centers/
50,000 classrooms
- ◆ Home- and center-based
- ◆ Prenatal, teen parents, homeless, etc.
- ◆ Significant increase – *more than 500 new programs in 2010*



Kidshearing.org

Overview of Head Start

Key Entities

- ◆ Head Start State Collaboration Offices
- ◆ Head Start Regional Offices
- ◆ Head Start T & TA contractors
- ◆ ZERO TO THREE/
Early Head Start
National Resource Center
- ◆ Specially funded Head Start Initiatives

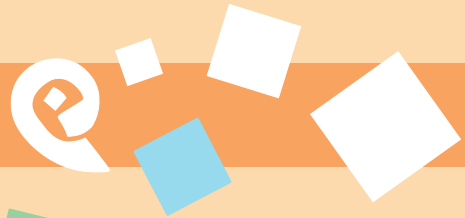


Kidshearing.org

- ★ 22 States
- ★ 200+ Head Start programs
- ★ >90,000 children screened
- ★ Identified conditions:
Permanent and conductive HL
& other middle ear conditions



- Oregon
- Washington
- Utah
- North Carolina
- DC
- Nebraska
- Kansas
- Colorado
- Iowa
- Oklahoma
- Florida
- Alaska
- Michigan
- Arkansas
- Connecticut
- Illinois
- Hawai'i
- Missouri
- Kentucky
- Virginia
- Pennsylvania



EHDI Coordinators & the ECHO Initiative

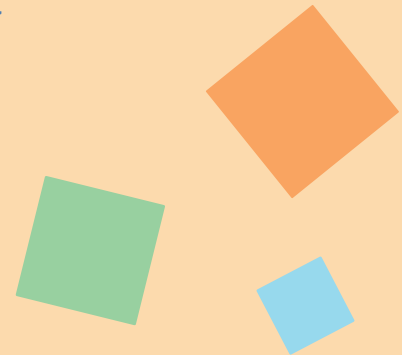
focus on

Tammy O'Hollearn, Iowa

Jeff Hoffman, Nebraska



- ◆ First reaction to idea of collaborating with Head Start
- ◆ What motivated you to explore it
- ◆ Key collaboration activities
- ◆ What's it like working with Head Start
- ◆ Outcomes
- ◆ Future hopes and goals / Head Start, Part C, Health Care



Kidshearing.org



First Steps

- ◆ Meet Head Start State Collaboration Office
- ◆ Get acquainted with ECHO resources
- ◆ Identify audiologists to partner with Head Starts
- ◆ Share EHDI resources with Head Starts
- ◆ Participate in Head Start trainings
- ◆ Provide ongoing TA
- ◆ Identify needs in Head Start, Part C and Health Care settings

Sustainability

What do we know about sustainability?

- ◆ Continued use of up-to-date practices in Head Start?
- ◆ Ongoing support and resources needed from EHDI's and others?



Long-term Sustainability

Programs can stay engaged over the long-term with support from:

- ◆ Local Resources
- ◆ State EHDI resources
- ◆ ECHO Initiative



Kidshearing.org



Kidshearing.org

Follow-up Interviews

19 of 21 original programs

- ◆ Continue use of OAE for 0-3 yr olds
- ◆ Current follow-up protocols
- ◆ Equipment issues
- ◆ Lessons learned

Sustainability Results

- ◆ All but one (18) using OAE as primary screening method
- ◆ Two Step Protocol
- ◆ Three Step Protocol
- ◆ Communication with primary care providers and audiologists
- ◆ Equipment Issues (calibration costs, maintaining supplies, repairs/parts replacements, acquiring new units)



Lesson Learned



- ◆ Timeframes for screening protocols
- ◆ Optimal screening environments
- ◆ Working with migrant families
- ◆ Children identified with permanent HL
- ◆ other...

Kidshearing.org

Supporting Programs to Foster Long-Term Sustainability

Providing adequate support for early hearing screening is both worthwhile & feasible

How we can help

- ◆ Periodic retraining
- ◆ Ongoing contact as needed
- ◆ Periodic reminders of available resources



Kidshearing.org



♦ kidshearing.org

We have ears so we can hear!



Check us out from
ear to ear.

Ask for a yearly hearing test.

Child under 3 years old?

Get an OAE (otoacoustic emissions) hearing screening.



Child 3 years or older?

Get a pure-tone audiometry screening.

