
EHDI:

Partnering for Progress



October 26-28, 2011 | Raleigh, North Carolina

Fifth Biennial Pediatric Audiology Symposium
(University of North Carolina at Chapel Hill)

Sixth Annual Investing in Family Support Conference
(National Center for Hearing Assessment & Management)

Fourth Southeastern Regional EHDI Conference
(Southeastern Public Health Programs and NCHAM)







2011 EHDI: PARTNERING FOR PROGRESS CONFERENCE
PLANNING COMMITTEE

INVESTING IN
FAMILY SUPPORT

Joni Alberg - Co-Chair
BEGINNINGS For Parents of Children Who Are Deaf/
Hard of Hearing, Inc.

Patti Martin - Co-Chair
Arkansas Children's Hospital

Mandy McClellan
Arkansas Hands & Voices

Anne McNally
John Tracy Clinic

Carianne Muse
Booz Allen Hamilton

PEDIATRIC AUDIOLOGY
SYMPOSIUM

Jackson Roush - Chair
University of North Carolina, Chapel Hill

Melody Harrison
University of North Carolina, Chapel Hill

Martha Mundy
University of North Carolina, Chapel Hill

Patricia Roush
University of North Carolina, Chapel Hill

Barbara Winslow Warren
University of North Carolina, Chapel Hill

SOUTHEAST REGIONAL
EHDI CONFERENCE

Faye McCollister - Chair
National Center for Hearing Assessment and Management (NCHAM)

Julie Beeler
Tennessee Newborn Hearing Screening Program

Pam Tempson
Florida EHDI Program

Kathleen Watts
North Carolina EHDI Program



TABLE OF CONTENTS

AGENDA.....	2-13	FRIDAY.....	8-13
WEDNESDAY	2	Plenary Session V.....	8
Plenary Session I.....	2	Break Session 5.....	8-9
THURSDAY	3-8	Break Session 6.....	9-10
Plenary Session II.....	3	Break Session 7.....	10-11
Plenary Session III	3	Break Session 8.....	11-12
Break Session I.....	3-4	Break Session 9.....	12-13
Break Session 2.....	5	Plenary Session VI.....	13
Break Session 3.....	6-7	EXHIBITS	14
Break Session 4.....	7	PAGES FOR NOTES	15-18
Plenary Session IV.....	8	MAPS.....	19-21
		AGENDA AT A GLANCE.....	Back Cover





WEDNESDAY

- Pre-conference Session
- Student Session
- Registration and Exhibits Open
- Welcome
- Plenary I
- Meet and Greet with Exhibitors
- Casual Dinner/Reception

AGENDA

WEDNESDAY - OCTOBER 26, 2011

1:00 – 4:00 pm	Pre-conference Session	<i>Capital Room</i>
	EHDI Grant Writing and Grant Review <i>Presenter: Jeff Hoffman, MS, Outreach Coordinator with the Early Childhood Hearing Outreach (ECHO) Initiative with the National Center for Hearing Assessment and Management (NCHAM)</i> This workshop will include a review and analysis of HRSA and CDC RFPs to fund EHDI programs, as well as responsive applications. Participants will gain experience in developing a logic model, goals, SMART objectives, and an evaluation plan. The workshop will provide participants with an opportunity to determine the components of an effective needs assessment, work plan, and budget narrative. Participants will analyze and discuss their recent applications with reviewer comments and determine how the application could be improved.	
3:00 – 5:00 pm	Student Session	<i>Governor's I and II</i>
	This pre-conference session for students will include an overview of the EHDI process, a brief description of the sponsoring organizations, and an orientation to the conference tracks and speakers. This will be followed by an informal meet-and-greet with light refreshments. All students, regardless of degree program or professional discipline, are welcome and encouraged to attend.	
4:00 pm	Registration and Exhibits Open	<i>Esplanade Gallery/Mezzanine</i>
5:00 pm	Welcome	<i>Oak Forest Ballroom</i>
5:15 – 6:30 pm	Plenary I	<i>Oak Forest Ballroom</i>
	Faces of Hearing Loss: Diversity of Parent Experiences <i>Presenter/Facilitator: Stephanie Olson, B.A., Children's Hospital Colorado</i> Adults with hearing loss bring an important perspective to the process of designing and improving EHDI systems. Ms. Stephanie Olson, born with hearing loss and now a cochlear implant user, also brings the perspective of parent counselor and family advocate. She will share her own journey from childhood to her current role as a family consultant at the Children's Hospital of Denver. She will then facilitate discussion by a parent panel reflecting on the diversity of experiences encountered by family members with emphasis on resources and services that were especially helpful.	
6:30 – 7:00 pm	Meet and Greet with Exhibitors	<i>Mezzanine</i>
7:00 – 8:00 pm	Casual Dinner/Reception	<i>Hannover Ballroom</i>

THURSDAY

- Breakfast with the Exhibitors
- Plenary II
- Plenary III
- Refreshment Break
- Breakout Session #I

AGENDA

THURSDAY - OCTOBER 27, 2011

8:00 – 8:45 am	Breakfast with the Exhibitors	Mezzanine
8:45 – 9:30 am	Plenary II Linking Family-Centered Principles with Practices and Outcomes <i>Presenter: Don Bailey, Ph.D., Research Triangle Institute</i> <p>From a philosophical perspective, family-centered principles enjoy wide support and have been adopted as recommended practice by various professional groups and in a variety of settings. Less clear is how these principles should be enacted in practice and what outcomes or family benefits should be expected as a result. This presentation describes central components of a family-centered approach, gives examples of how to embed family-centered principles in practice, and discusses the importance of thinking about the link between practices and outcomes.</p>	Oak Forest Ballroom
9:35 – 10:20 am	Plenary III Comprehensive Assessment and Management of Congenital Hearing Loss: An Otologist's Perspective <i>Presenter: Craig Buchman, M.D., UNC Chapel Hill</i> <p>Comprehensive assessment and management of infants and young children with congenital hearing loss requires an interdisciplinary team with the expertise, instrumentation, and institutional support needed to enable early diagnosis and appropriate intervention. This presentation will examine the continuum of care developed at UNC from referral to diagnosis, and from diagnosis to selection/fitting of hearing aids and/or cochlear implants. Emphasis will be placed on changing criteria for cochlear implantation; single vs bilateral cochlear implantation; simultaneous vs sequential implantation; bimodal considerations, and an update on electric-acoustic stimulation.</p>	Oak Forest Ballroom
10:20 – 10:35 am	Refreshment Break	Mezzanine
10:35 – 11:20 am	Breakouts Sessions #I Breakout I Ask the Doctor <i>Presenter: Craig Buchman, M.D., UNC Chapel Hill and Susan Wiley, M.D., Cincinnati Children's Hospital Medical Center</i> <p>This session will feature two prominent physicians familiar with early hearing detection and intervention, an ENT/otologic surgeon (Dr. Buchman) and a developmental pediatrician (Dr. Wiley). Each will provide brief introductory remarks describing the roles of their respective medical specialties followed by an informal question and answer session with the audience. The session will be of interest to parents and professionals.</p>	Hannover III



THURSDAY cont.
• Breakout Session #1 cont.

AGENDA

THURSDAY - OCTOBER 27, 2011

Breakout 2

Oak Forest Ballroom

Screening and Referral; Avoiding Loss to Follow-up

Presenter: Shawn Van Steen, M.S., Wake Med Health and Hospitals and Kelly Baroch, Au.D., Cincinnati Children's Hospital Medical Center

Lost to follow-up rates from newborn hearing screening programs continue to be a challenge nationally with 46% of infants not returning for diagnostic evaluation (Todd 2005). This session will provide an in-depth look at two screening programs and the interventions that have been utilized to significantly decrease loss to follow up. Commonalities and differences in the well-baby versus NICU population will be highlighted.

Breakout 3

Governor's I and II

Changing Health Care Financing for EHDI Programs: The Essential Elements of Reimbursement.

Presenter: Robert Fifer, Ph.D., University of Miami

There is a tremendous push to reduce the overall cost of healthcare services. Infant hearing and pediatric services are caught in this tidal wave of proposals to decrease reimbursement, shift costs, and shift responsibilities for financial support of all healthcare services. This presentation will focus on the trends currently taking place, principles of coding for hospital and outpatient settings, coding, and documentation requirements.

Breakout 4

Hannover II

The Road to a Teleaudiology Program - Bumpy, But Worth the Journey

Presenter: Gloria Jones, R.N., East Carolina University, Andrew Stuart, Ph.D., East Carolina University, Kathleen Watts, M.A., NC EHDI Program

North Carolina used supplemental funding from HRSA to develop a pilot Teleaudiology Project to provide diagnostic evaluations for children from rural northeastern North Carolina. The project involved a partnership with East Carolina University Telemedicine Program and Communication Science and Disorders Department. This session will present the challenges encountered in the process of development and how they were overcome, the resources needed to reach the goal of serving families via telemedicine, and an explanation of how the project, which started seeing children in February, 2011, functions.



THURSDAY cont.
• Breakout Session #2
• Lunch

AGENDA

THURSDAY - OCTOBER 27, 2011

11:25 am -12:10 pm Breakout Sessions #2

Breakout 1

Hannover III

Family Support: Let's Start at the Very Beginning...

Presenters: Patti Martin, Ph.D., Arkansas Children's Hospital and Mandy McClellan, B.A., Arkansas Hands & Voices

Early hearing detection and intervention offer the promise of improved outcomes for children who are deaf/hard of hearing. Unfortunately, family support as an integral continuum of service provision is often undervalued. This session presents a conceptual framework, backed by research and resources, developed collaboratively for the National Center for Hearing Assessment and Management. An outline of "where to start" and "next steps" will be provided, identifying key resources and stakeholders that are necessary to provide high quality support programs to families of children who are deaf/hard of hearing.

Breakout 2

Oak Forest Ballroom

Diagnostic ABR for Infants Referred from Newborn Screening

Presenter: John Grose, Ph.D., UNC Chapel Hill

The auditory brainstem response (ABR) plays an important role in the initial evaluation of infants referred from newborn screening because behavioral testing is typically not appropriate at this stage. This session will review the application of ABR testing in the context of follow-up assessment, with particular emphasis on optimizing test parameters to maximize the amount of frequency-specific information obtained. Stimulus, recording, and patient factors will be considered. Common pitfalls in ABR evaluation and interpretation will also be discussed.

Breakout 3

Governor's I and II

Continued - Changing Health Care Financing for EHD Programs: The Essential Elements of Reimbursement.

Presenter: Robert Fifer, Ph.D.

Breakout 4

Hannover II

Use of Video-Conferencing Technology in North Carolina: Mentoring/Coaching and Direct Service Delivery

Presenters: Hannah Eskridge, M.S.P., and Holly Teagle, Au.D. UNC Chapel Hill, Dept of Otolaryngology and Head & Neck Surgery and Center for the Acquisition of Spoken Language through Listening Enrichment (CASTLE) and the Carolina Children's Communicative Disorders Program (CCCDP)

The UNC CCCDP and CASTLE are undertaking a project to implement a video conferencing technology-based approach to train and support school professionals and early interventionists throughout North Carolina on the strategies and skills needed to facilitate spoken language development for children who are learning to listen and speak using hearing aids and cochlear implants. The program includes training modules in a variety of formats followed by one on one mentoring/coaching. This pilot program will be described and the benefits and challenges of using this technology for teaching and mentoring and for direct service delivery will be discussed.

12:10 – 1:15 pm

Lunch (Provided)

Mezzanine



THURSDAY cont.
• Breakout Session #3

AGENDA

THURSDAY - OCTOBER 27, 2011

1:15 – 2:00 pm

Breakout Sessions #3

Breakout 1

Hannover III

Engaging Parents and Family Members in Early Intervention

Presenter: Kathryn Wilson, M.A., UNC Chapel Hill Division of Speech and Hearing Sciences/First Years

Early identification and 21st century technology in combination with appropriate intervention during the period of maximum neural plasticity is the foundation for language and literacy development and ultimate academic success. When parents are actively involved, outcomes are enhanced for all children. This presentation will focus on key concepts related to family-centered intervention designed to empower parents as key decision makers and primary teachers. Effective strategies, and techniques to engage parents and families in all aspects of early intervention from diagnosis to transition at age three will be discussed.

Breakout 2

Oak Forest Ballroom

Audiological Management of Unilateral Hearing Loss

Presenter: Anne Marie Tharpe, Ph.D., Vanderbilt University

Twenty years ago, audiologists, physicians, and other professionals were largely unconcerned about the impact of unilateral hearing loss on children. Audiologists would advise preferential seating for these children when they started school and assured parents there would be no problems. However, as more parents expressed concern about their child's academic progress, professionals began to pay closer attention to this "minimal" problem. Today we have a significant amount of information about the psychoeducational and behavioral outcomes of children with unilateral hearing loss. This presentation will review what we know about children with unilateral hearing loss today and what remains to be learned.

Breakout 3

Governor's I and II

EHDI Marketing – Does it Really Make a Difference?

Presenters: Carrie Balian, B.A., IL Guide By Your Side and Rachel St. John, M.D., Health Education Consultant

Do you find it difficult to get providers interested and involved in EHDI practices? Is there a clear marketing strategy? During this session you will explore various models to learn what has worked and how you can share a clear vision of what your program has to offer. The session will also look at various tools and resources that programs have in place to utilize for marketing and outreach while creating effective ways to measure the success of that outreach. After this session you will walk away with tools you can implement immediately to strengthen any program!



THURSDAY cont.

- Breakout Session #3 cont.
- Breakout Session #4
- Refreshment Break with Exhibitors

AGENDA

THURSDAY - OCTOBER 27, 2011

Breakout 4

Hannover II

Technology for Families of Children who are D/HH

Presenters: Ryan McCreery, Ph.D., Boys Town National Research Hospital and Martha Mundy, Au.D., UNC Chapel Hill

Hearing aids and cochlear implants can now be used with FM, Bluetooth, and other assistive listening technologies to improve reception of cell phones, TV, and other devices. This session, led by two experienced pediatric audiologists, will provide an introduction and review of these devices and how they can be used effectively by children and adolescents. The session will be of interest to parents as well as professionals interested in a better understanding of assistive technology used with hearing aids and cochlear implants. This will be an interactive session with time for Q&A from the audience.

2:05 – 2:50 pm

Breakout Sessions #4

Breakout 1

Hannover III

Raising New Parents into Advocates in Part C

Presenter: Sara Kennedy, B.S., Hands & Voices Colorado

An experienced parent advocate shares a vision for modeling, coaching and supporting new parents toward their understanding and full participation in the IFSP process on behalf of their deaf/hard of hearing babies and toddlers. Participants will recognize how deaf and hard of hearing children can challenge the status quo of the Part C system in the areas of natural environments and generalist providers. Participants will be introduced to the IFSP Communication Plan, designed to structure the IFSP to include critical conversations about communication methods, proficiency of staff, and the inclusion of deaf/hard of hearing adult role models and peers into the plan. Participants will learn about helpful written resources in addition to this new document as well as become familiar with high touch resources for families.

Breakout 2

Oak Forest Ballroom

Behavioral Assessment of Infants and Young Children

Presenter: Diane Sabo, Ph.D., University of Pittsburgh

Since the passage of legislation to screen all newborns for hearing loss, many young infants are making their way in to our clinics. These infants can be challenging to us. They challenge us to work efficiently and develop new skills in diagnosis and management of hearing loss. This presentation will focus on young infants and the behavioral audiologic evaluations that are needed to understand their ability to hear and to use sound.

Breakout 3

Governor's I and II

Continued - EHDI Marketing – Does it Really Make a Difference?

Presenters: Carrie Balian, B.A., and Rachel St. John, M.D.

2:50 – 3:05 pm

Refreshment Break with Exhibitors

Mezzanine



THURSDAY cont.
 • Resource Exchange
 • Plenary IV

FRIDAY
 • Breakfast
 • Plenary V
 • Break
 • Breakout Session #5

AGENDA

THURSDAY - OCTOBER 27, 2011

3:05 – 4:20 pm	RESOURCE EXCHANGE <i>Oak Forest Ballroom, Governor's I and II, Hannover II, Hannover III</i>	
	During this session, participants will have the opportunity to learn about a variety of new products and services that are EHDI related.	
4:20 – 4:30 pm	Break	
4:30 – 5:15 pm	Plenary IV	<i>Oak Forest Ballroom</i>
	Children Who are Hard of Hearing: A New Chapter Presenter: Mary Pat Moeller, Ph.D., Boys Town National Research Center	
	Thirty years ago, Dr. Julia Davis observed that the needs of children who were hard of hearing were often underestimated. She characterized this group as "Our Forgotten Children," out of concern for gaps in service delivery and the consequences for outcomes. Today, professionals are met with a new generation of children who have earlier access to interventions and better amplification devices than ever before. If we wrote a "new chapter" about these children, what would it say about their outcomes? Are any children still "forgotten?"...and what might they prompt us to remember as we strive to improve our services?	

FRIDAY, OCTOBER 28, 2011

7:45 – 8:15 am	Breakfast	<i>Mezzanine</i>
8:15 – 9:00 am	Plenary V	<i>Oak Forest Ballroom</i>
	When It's More Than Hearing... Presenter: Susan Wiley, M.D., Cincinnati Children's Hospital Medical Center	
	This session will provide a combination of data-driven perspective and anecdotal experiences to guide interventionists, families, clinicians, and state EHDI programs in the understanding of the complex needs of children with hearing loss and co-existing developmental disabilities. Tools to help guide planning will be discussed as well as strategies to develop effective teams.	
9:00 – 9:10 am	Break	
9:10 – 9:55 am	Breakout Sessions #5	
	Breakout I	<i>Hannover III</i>
	Using Social Media to Connect and Educate Presenter: Carianne Muse, M.P.H., Booz Allen Hamilton	
	Social Media is a broad term which has been over used and over promised as the single solution for marketing and communicating. Professionals in public health, Deaf and Hard of Hearing professionals, and the parent community are currently seeking and utilizing social media solutions to build bridges, understand populations, advertise interventions, and form networks. This session will discuss critical perspectives on the successes and pitfalls of depending on social media for the purposes of connecting and educating within D/HH parent and professional groups.	



FRIDAY cont.

- Breakout Session #5 cont.
- Refreshment Break
- Breakout Session #6

AGENDA

FRIDAY, OCTOBER 28, 2011

Breakout 2

Oak Forest Ballroom

Diagnosis and Management of Auditory Neuropathy Spectrum Disorder

Presenter: Patricia Roush, Au.D., UNC Chapel Hill School of Medicine

Auditory neuropathy is a relatively recent clinical diagnosis characterized by abnormal auditory brainstem responses with evidence of normal outer hair cell function. Auditory neuropathy may account for up to 10% of newly diagnosed cases of sensorineural hearing loss. Children diagnosed with this disorder exhibit a wide range of functional hearing abilities. For audiologists and other professionals, infants with ANSD present special challenges for both diagnosis and management. This presentation, will describe the characteristics of children with ANSD and the multidisciplinary approach needed for diagnosis and management. Case studies will illustrate various characteristics and management strategies.

Breakout 3

Governor's I and II

Ethics and Professional Responsibility in EHDI Programs

Presenter: Karen Ditty, Au.D., Texas ENT Specialists

Are EHDI Professionals ready to make ethical decisions in the professional predicaments in which they may find themselves? How are these decisions made in the care of the infant going through the EHDI continuum? These questions will be asked after a definition of key concepts relating to ethical, moral and legal issues are discussed. Real life issues will be examined in newborn hearing screening, the referral process, the diagnostic process and the intervention process. These predicaments, from each area of the EHDI continuum, will be discussed as it relates to ethical and professional responsibility.

9:55-10:05 am

Refreshment Break

Mezzanine

10:05-10:50 am

Breakout Sessions #6

Breakout 1

Hannover III

Making the Transition from Early Intervention to Preschool Services a Smooth Process

Presenters: Terri Burcham, B.S. and Diane Doak, B.S., BEGINNINGS for Parents of Children Who Are Deaf or Hard of Hearing, Inc.

This session will focus on involving parents in the transition process. Participants will learn techniques for educating parents about Preschool Exceptional Children's services. Participants will then learn ways to empower parents to be active IEP team members. Emphasis will be placed on preparing parents for their first IEP meeting and teaching them advocacy skills

Breakout 2

Oak Forest Ballroom

Hearing Aid Selection and Fitting for Infants and Young Children

Presenter: Ryan McCreery, Ph.D., Boys Town National Research Hospital

Audiologists face difficult decisions regarding which hearing aid features to select for their pediatric patients and how to verify the impact of those features on audibility. A clinical protocol for selection and verification of hearing aid features for children and supporting evidence will be presented.



FRIDAY cont.

- Breakout Session #6 cont.
- Breakout Session #7

AGENDA

FRIDAY, OCTOBER 28, 2011

Breakout 3

Governor's I and II

Data Management for ELDI: Helpful Friend, not Dreaded Foe

Presenters: John Eichwald, M.A., Centers for Disease Control and Prevention and Karen Fowler, Dr.P.H., University of Alabama

In today's fiscal environment, ELDI programs are under particular scrutiny to collect essential evidence to support and defend their programs. Without adequate data, accountability and liability concerns exist. Comprehensive information management systems empower us with a capability to collect, monitor and report quality data related to our 1-3-6 primary goals. With this essential information we can identify ways to improve and make positive changes that affect the outcomes of deaf and hard of hearing children and their families, the ultimate beneficiaries of ELDI.

Breakout 4

Hannover II

Role of Deaf and Hard of Hearing Adults in Supporting Families of Newly Identified Children

Presenter: Bobbie Beth Scoggins, Ph.D., Communication Service for the Deaf

This session will address how to tap into inner Deaf and Hard of hearing Community networks for getting family support – raising and supporting your Deaf or Hard of Hearing child. This session will empower parents, service providers and educators on how to utilize knowledge and support from deaf and hard of hearing adults in areas of development in language, and emotional, cognitive and psychological aspects for a deaf or hard of hearing child. Resources such as educational systems, deaf and hard of hearing professionals, national/state/local resources serving deaf and hard of hearing communities will be discussed and shared.

10:55-11:40 am

Breakout Sessions #7

Breakout 1

Hannover III

Continued – Making the Transition from Early Intervention to Preschool Services a Smooth Process

Presenters: Terri Burcham, B.S., and Diane Doak, B.S.

Breakout 2

Oak Forest Ballroom

Use of Frequency Lowering Schemes in Pediatric Hearing Aid Fitting

Presenter: Lori Leibold, Ph.D., UNC Chapel Hill and Andrea Hillock-Dunn, Au.D., Ph.D., UNC Chapel Hill

Although a relatively new technology, frequency lowering is commonly used in hearing aid fittings with infants and children. This session will provide an explanation of the types of frequency lowering technology, rationale for its use, and review work investigating the efficacy of nonlinear frequency compression (NFC) hearing aids.

Breakout 3

Governor's I and II

Continued - Data Management for ELDI: Helpful Friend, not Dreaded Foe

Presenters: John Eichwald, M.A., and Karen Fowler, Dr.PH



FRIDAY cont.

- Breakout Session #7 cont.
- Lunch
- Breakout Session #8

AGENDA

FRIDAY, OCTOBER 28, 2011

Breakout 4

Hannover II

Enhancing Your Capacity to Connect with Latino/Hispanic Families as They Journey Through the EHDI System

Presenter: Wendy Jones, M.A. and M.S.W., National Center for Cultural Competence

This interactive session will provide a framework, guiding values and principles for providing culturally and linguistically competent EHDI services to Latino/Hispanic families. Special emphasis will be placed on: (a) understanding the varied cultural contexts of Latino/Hispanic families, (b) discussion of actual and perceived barriers/challenges to accessing services and service delivery, (c) exploration of approaches to increase community engagement, and (d) effective strategies to decrease loss to follow-up and family involvement in EHDI services and supports.

11:40 am - 1:00 pm

Lunch (on your own)

1:00- 1:45 pm

Breakout Sessions #8

Breakout 1

Hannover III

Fathers of Children with Hearing Loss: Fostering Greater Inclusion in Service Provision

Presenter: Todd Houston, Ph.D., University of Akron

Traditionally, mothers have been the primary contact for professionals providing intervention and support services to families of children with hearing loss. Fathers have been described as the peripheral parent. This presentation will explore the results of a national survey of over 200 fathers of children with hearing loss. These fathers expressed a range of emotions about their experiences with professionals, and their insights provide fertile ground for improving overall service provision.

Breakout 2

Oak Forest Ballroom

Illustrative Cases of Pediatric Amplification

Presenter: Ryan McCreery, Ph.D., Boys Town National Research Hospital

Pediatric audiologists experience unique and complex challenges when providing amplification to children and supporting their families. Examples of clinical cases will be used to demonstrate the importance of hearing aid selection and verification protocols for children.

Breakout 3

Governor's I and II

Gems of Wisdom for Program Improvement from EHDI Coordinators

Presenter: Faye McCollister, Ed.D., NCHAM and Pam Tempson, M.A., Florida Newborn Screening Program

This session will review specific efforts by State EHDI Coordinators to improve their statewide EHDI Programs. Even though substantial improvements have occurred for EHDI Programs, loss to follow-up and service to specific populations including border babies, NICU babies, and Hispanic babies need additional attention. State EHDI Coordinators will describe their most successful efforts to improve their programs. This session will be interactive with ample opportunity for participants to provide additional information.



FRIDAY cont.

- Breakout Session #8 cont.
- Breakout Session #9

AGENDA

FRIDAY, OCTOBER 28, 2011

Breakout 4

Hannover II

Express Yourself! Supporting Siblings of Children with Special Needs

Presenters: Nancy Micca, M.S.Ed., Family Support Network of Central Carolina and Rene Morrison, A.D., Family Support Network of Wake County

This session will introduce the Sibshops Model peer support program for children who have a brother or sister with special needs. We will spend some time discussing the unique joys and challenges living with a brother or sister with special needs often brings, look at how the Sibshops model is structured, and learn how to begin the process of starting a Sibshops in your community. Participants will explore components of this extremely popular, high energy peer support model including specific techniques used to encourage communication and problem solving.

1:50 – 2:35 pm

Breakout Sessions #9

Breakout 1

Hannover III

Setting Up for Success: Tips for Enhancing Your Child's Auditory and Visual Access

Presenters: Anne McNally, M.A., John Tracy Clinic in Los Angeles and Stephanie Sjobald, Au.D., UNC Hearing and Communication Center

Communication is a complex process and children's needs may change with every person, setting and activity. Families can support their children across multiple environments by being aware of communication challenges and considering strategies to improve interactions. The two presenters have a lifetime of experiences to share as they both have personal and professional experience with hearing loss and solutions to maximize communication. Parents and service providers can develop a top ten tip list of ideas for promoting a young child's access in different situations.

Breakout 2

Oak Forest Ballroom

Outcomes of Children with Hearing Loss: A Study of Children with Mild to Severe Hearing Loss

Presenters: Melody Harrison, Ph.D., UNC Chapel Hill School of Medicine, Mary Pat Moeller, Ph.D., Boys Town National Research Center; Patricia Roush, Au.D., UNC Chapel Hill School of Medicine

In 2008, the National Institutes for Health funded a five year, multi-center project to study the moderators of outcomes of children with mild-to-severe hearing loss. The focus of this study, which is a collaborative project with investigators at Boys Town National Research Hospital, The University of Iowa and The University of North Carolina at Chapel Hill, is to examine variations in the delivery and effectiveness of early interventions including hearing aid fitting and early intervention services. In this presentation a comprehensive set of child and family outcome measures that support early development will be described and preliminary data from the first 12 months of testing will be presented.



FRIDAY cont.

- Breakout Session #9 cont.
- Refreshment Break
- Plenary VI

FRIDAY, OCTOBER 28, 2011

Breakout 3

Governor's I and II

Optimizing Hearing Services for NICU Babies Through Interdisciplinary Collaboration

Presenter: Kelly Baroch, Au.D., Cincinnati Children's Hospital Medical Center

Due to medical advances, more high-risk infants are surviving and NICU lengths of stay are increasing. For these infants, meeting the 1-3-6 timeline may require identification and intervention of hearing loss in the NICU setting. An interdisciplinary approach is required to develop a complete infant hearing program which includes: diagnostic hearing evaluations for inpatient infants, NICU sign language program, timely fitting of amplification, sensory care plans for all identified infants, increased staff awareness of the effects of hearing loss in NICU infants, decreased lost to follow-up and identified trends in family prioritization of NICU intervention strategies.

2:35 - 2:45 pm

Refreshment Break

2:45 - 3:30 pm

Plenary VI

Oak Forest Ballroom

Lessons Learned from 20 Years of Newborn Hearing Screen Program

Presenter: Karl White, Ph.D., Utah State University; NCHAM

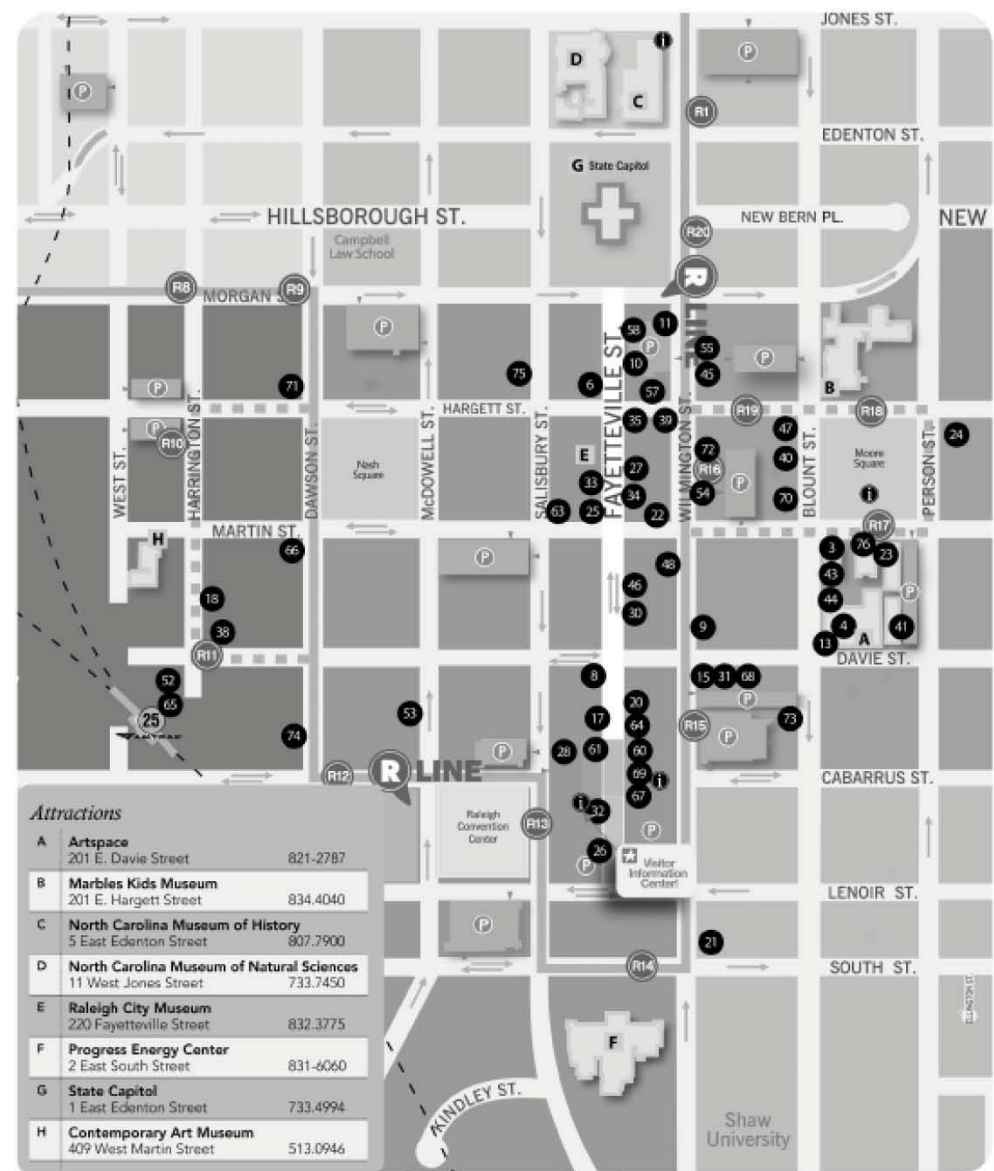
If not detected and treated within the first few months of occurrence, childhood hearing loss may cause significant delays in cognitive, language, and social development. During the last 20 years several countries have implemented successful newborn hearing screening programs. However, because of problems ensuring timely and appropriate diagnosis and early intervention, to infants who fail the screening, many children with hearing loss are not yet experiencing the benefits associated with early identification. Lessons learned over the past decade will be used to describe the current status of hearing screening, diagnosis, and intervention programs, and suggestions for improvement will be given.





Hanging Around Downtown

Your guide to the best food, attractions and shopping...
within walking distance of downtown Raleigh's convention center campus





Downtown Restaurants

KEY: Price range: \$=meal for 2 people under \$20; \$\$=meal for 2 people \$20-\$40; \$\$\$=meal for 2 people more than \$40; Meals served: B=breakfast; L=lunch; D=dinner; Br=brunch; Ln=late night

RESTAURANT NAME	ADDRESS	PHONE (919)	CUISINE STYLE	PRICE RANGE	MEALS SERVED
4 Big Ed's Country Cooking	220 Wolfe St.	836.9909	Southern	\$	B, L
6 Café Carolina and Bakery	150 Fayetteville St.	834.9117	Deli/Café	\$	B, L
8 Chick-fil-A	400 Fayetteville St.	834.3875	American	\$	B, L
9 Clyde Coopers Barbeque	109 E. Davie St.	832.7614	BBQ	\$	L, D
10 Crema on Fayetteville	121 Fayetteville St., Ste. 110	832.5959	Deli/Café	\$\$	B, L, D
11 Dos Tequilas Centro	106 S. Wilmington St.	835.3593	Mexican	\$	L, D, Br (Sat.)
13 El Rodeo	329 S. Blount St.	829.0777	Mexican	\$	L, D
15 bu.ku	110 E. Davie St.	834.6963	Pan-Asian	\$\$\$	L, D, Br, Ln
17 The Gallery Restaurant @ The Sheraton	421 S. Salisbury St.	834.9900	New American	\$\$	B, L, D, Br, Ln
18 Humble Pie	317 S. Harrington St.	829.9222	Tapas	\$\$	B, L, D
20 The Plaza Cafe	411 Fayetteville St.	546.6488	Cafeteria	\$	B, L
21 McDonald's	105 E. South St.	833.7800	American	\$	B, L, D, Ln
22 Mecca Restaurant	13 E. Martin St.	832.5714	American	\$	B, L, D
23 Benelux Café	309 Blake St.	926.8796	Café	\$	B, L, D
24 Mo's Diner	306 E. Hargett St.	856.0980	Fine Dining	\$\$\$	D
25 Port City Java	234 Fayetteville St.	232.5282	Café	\$	B, L
26 Posta Tuscan Grille @ The Marriott	500 Fayetteville St.	227.3370	Italian	\$\$\$	B, L, D
27 Quiznos	1 Exchange Plaza, Ste. 115	836.0034	American	\$	L
28 Sam & Wally's/Eatery and Bar	434 Fayetteville St.	829.7215	Deli/Café	\$	B, L
30 Sono	319 Fayetteville St., Ste. 101	521.5328	Asian	\$\$\$	L, D
31 Sosta Café	130 E. Davie St.	833.1006	Deli/Café	\$	B, L
32 Starbucks	500 Fayetteville St.	334.9894	Coffee	\$	B, L, D
33 The Big Easy	222 Fayetteville St.	832.6082	Cajun/Creole	\$\$	L, D, Ln
34 The Mint	219 Fayetteville St.	821.0011	Fine Dining	\$\$\$	L (Tu-Fri) D, Ln
35 The Morning Times Café	8 E. Hargett St.	836.1204	Deli/Café	\$	B, L, D
38 The Pit Authentic BBQ	328 W. Davie St.	890.4500	BBQ	\$\$	L, D
39 The Raleigh Times	14 E. Hargett St.	833.0999	American	\$\$	L, D, Ln
40 Tir na nÓg	218 S. Blount St.	833.7795	Irish Pub	\$\$	L, D, LN, Br
41 Vic's Italian Restaurant	331 Blake St.	829.7090	Italian	\$\$	L, D
43 Woody's at City Market	205 Wolfe St.	833.3000	American	\$	L, D, Ln
44 Zydeco Downtown	208 Wolfe St.	834.7987	Cajun/Creole/Seafood	\$\$	L, D, Br, Ln
45 Sitti	137 S. Wilmington St.	239.4070	Middle Eastern	\$\$	L, D
46 The Oxford	319 Fayetteville St.	832.6622	New American	\$\$	L, D, Ln
47 Caffè Luna	136 E. Hargett St.	832.6090	Italian	\$\$	L, D
48 Manhattan Cafe	320 S. Wilmington St.	833.6105	Deli	\$	B, L, D
52 Jibarra Restaurant	327 W. Davie St.	755.0556	Mexican	\$\$	Br, L, D
53 Poole's Diner	426 S. McDowell St.	832.4477	American	\$\$	Br, D, Ln
54 Busy Bee Cafe	225 S. Wilmington St.	424.7817	American	\$\$	B, Br, L, D, Ln
55 Gravy	135 S. Wilmington St.	896.8513	Italian	\$\$	L, D, Ln
57 The Remedy Diner	137 E. Hargett St.	835.3553	American	\$	B, L, D
58 Spice Café	121 Fayetteville St., Ste. 108	828.5000	Pan-Asian	\$	L, D
60 Jimmy John's	437 Fayetteville St.	754.0101	Deli/Café	\$	L, D, LN
61 Shish-Kabob City Plaza	438 Fayetteville St.	833.4005	Greek	\$	L, D
63 Capital Club 16	16 W. Martin St.	832.6866	New American	\$\$\$	D, Ln, L, Br
64 LaVolta	411 Fayetteville St.	838.8700	Italian	\$\$\$	L, D, Ln
65 Tuscan Blu	327 W. Davie St.	834.5707	Italian	\$\$	L (M-F) D, (T-Sat.)
66 Brewmasters Bar and Grill	301 W. Martin St.	836.9338	American	\$\$	L, D, Ln
67 Crema	421 Fayetteville St., Ste. 101	834.7279	Deli/Café	\$	B, L, D
68 Dickey's BBQ Pit	170 E. Davie St.	809.8830	BBQ	\$	B, L, D
69 ZPizza	421 Fayetteville St., Ste. 103	838.0681	Pizza	\$	L, D
70 Fai Thai	222 S. Blount St.	838.0055	Thai	\$\$	D
71 The Astoria Café & Lounge	300 W. Hargett St.	917.2943	American	\$\$	B, L, D, Ln
72 Wilmore Café	223 S. Wilmington St.	754.1456	Deli/Café	\$\$	L, D
73 Calavera	444 S. Blount St., Ste. 101	617.1661	Mexican, Latin American	\$\$	L, D, Ln
74 Chris London's Backstage	428 S. Dawson St.	832.1608	American	\$	L, D
75 Subway	126 S. Salisbury St.	828.0009	Deli/Café	\$	B, L, D
76 Subway	220 E. Martin St.	828.9977	Deli/Café	\$	B, L, D



Downtown Restaurants

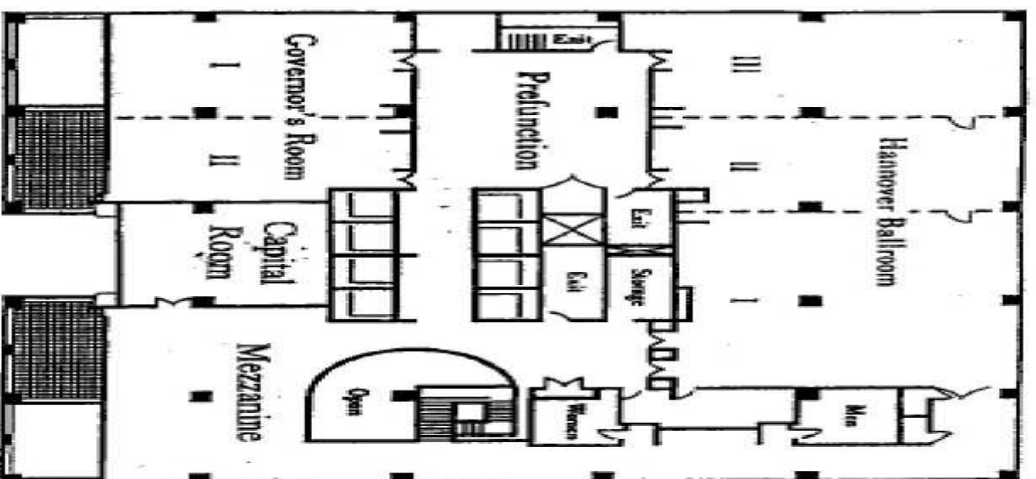
KEY: Price range: \$=meal for 2 people under \$20; \$\$=meal for 2 people \$20-\$40; \$\$\$=meal for 2 people more than \$40; Meals served: B=breakfast; L=lunch; D=dinner; Br=brunch; Ln=late night

RESTAURANT NAME	ADDRESS	PHONE (919)	CUISINE STYLE	PRICE RANGE	MEALS SERVED
4 Big Ed's Country Cooking	220 Wolfe St.	836.9909	Southern	\$	B, L
6 Café Carolina and Bakery	150 Fayetteville St.	834.9117	Deli/Café	\$	B, L
8 Chick-fil-A	400 Fayetteville St.	834.3875	American	\$	B, L
9 Clyde Coopers Barbeque	109 E. Davie St.	832.7614	BBQ	\$	L, D
10 Crema on Fayetteville	121 Fayetteville St., Ste. 110	832.5959	Deli/Café	\$\$	B, L, D
11 Dos Taquitos Centro	106 S. Wilmington St.	835.3593	Mexican	\$	L, D, Br (Sat.)
13 El Rodeo	329 S. Blount St.	829.0777	Mexican	\$	L, D
15 bu.ku	110 E. Davie St.	834.6963	Pan-Asian	\$\$\$	L, D, Br, Ln
17 The Gallery Restaurant @ The Sheraton	421 S. Salisbury St.	834.9900	New American	\$\$	B, L, D, Br, Ln
18 Humble Pie	317 S. Harrington St.	829.9222	Tapas	\$\$	B, L, D
20 The Plaza Cafe	411 Fayetteville St.	546.6488	Cafeteria	\$	B, L
21 McDonald's	106 E. South St.	833.7800	American	\$	B, L, D, Ln
22 Mecca Restaurant	13 E. Martin St.	832.5714	American	\$	B, L, D
23 Benelux Café	309 Blake St.	926.8796	Café	\$	B, L, D
24 Mo's Diner	306 E. Hargett St.	856.0980	Fine Dining	\$\$\$	D
25 Port City Java	234 Fayetteville St.	232.5282	Café	\$	B, L
26 Posta Tuscan Grille @ The Marriott	500 Fayetteville St.	227.3370	Italian	\$\$\$	B, L, D
27 Quiznos	1 Exchange Plaza, Ste. 115	836.0034	American	\$	L
28 Sam & Wally's/Eatery and Bar	434 Fayetteville St.	829.7215	Deli/Café	\$	B, L
30 Sono	319 Fayetteville St., Ste. 101	521.5328	Asian	\$\$\$	L, D
31 Sosta Café	130 E. Davie St.	833.1006	Deli/Café	\$	B, L
32 Starbucks	500 Fayetteville St.	334.9894	Coffee	\$	B, L, D
33 The Big Easy	222 Fayetteville St.	832.6082	Cajun/Creole	\$\$	L, D, Ln
34 The Mint	219 Fayetteville St.	821.0011	Fine Dining	\$\$\$	L (Tu-Fri) D, Ln
35 The Morning Times Café	8 E. Hargett St.	836.1204	Deli/Café	\$	B, L, D
38 The Pit Authentic BBQ	328 W. Davie St.	890.4500	BBQ	\$\$	L, D
39 The Raleigh Times	14 E. Hargett St.	833.0999	American	\$\$	L, D, Ln
40 Tir na nÓg	218 S. Blount St.	833.7795	Irish Pub	\$\$	L, D, LN, Br
41 Vic's Italian Restaurant	331 Blake St.	829.7090	Italian	\$\$	L, D
43 Woody's at City Market	205 Wolfe St.	833.3000	American	\$	L, D, Ln
44 Zydeco Downtown	208 Wolfe St.	834.7987	Cajun/Creole/Seafood	\$\$	L, D, Br, Ln
45 Sitti	137 S. Wilmington St.	239.4070	Middle Eastern	\$\$	L, D
46 The Oxford	319 Fayetteville St.	832.6622	New American	\$\$	L, D, Ln
47 Caffé Luna	136 E. Hargett St.	832.6090	Italian	\$\$	L, D
48 Manhattan Cafe	320 S. Wilmington St.	833.6105	Deli	\$	B, L, D
52 Jibarra Restaurant	327 W. Davie St.	755.0556	Mexican	\$\$	Br, L, D
53 Poole's Diner	426 S. McDowell St.	832.4477	American	\$\$	Br, D, Ln
54 Busy Bee Cafe	225 S. Wilmington St.	424.7817	American	\$\$	B, Br, L, D, Ln
55 Gravy	135 S. Wilmington St.	896.8513	Italian	\$\$	L, D, Ln
57 The Remedy Diner	137 E. Hargett St.	835.3553	American	\$	B, L, D
58 Spize Café	121 Fayetteville St., Ste. 108	828.5000	Pan-Asian	\$	L, D
60 Jimmy John's	437 Fayetteville St.	754.0101	Deli/Café	\$	L, D, LN
61 Shish-Kabob City Plaza	438 Fayetteville St.	833.4005	Greek	\$	L, D
63 Capital Club 16	16 W. Martin St.	832.6866	New American	\$\$\$	D, Ln, L, Br
64 LaVolta	411 Fayetteville St.	838.8700	Italian	\$\$\$	L, D, Ln
65 Tuscan Blu	327 W. Davie St.	834.5707	Italian	\$\$	L (M-F) D, (T-Sat.)
66 Brewmasters Bar and Grill	301 W. Martin St.	836.9338	American	\$\$	L, D, Ln
67 Crema	421 Fayetteville St., Ste. 101	834.7279	Deli/Café	\$	B, L, D
68 Dickey's BBQ Pit	170 E. Davie St.	809.8830	BBQ	\$	B, L, D
69 ZPizza	421 Fayetteville St., Ste. 103	836.0681	Pizza	\$	L, D
70 Fai Thai	222 S. Blount St.	838.0055	Thai	\$\$	D
71 The Astoria Café & Lounge	300 W. Hargett St.	917.2943	American	\$\$	B, L, D, Ln
72 Wilmore Café	223 S. Wilmington St.	754.1456	Deli/Café	\$\$	L, D
73 Calavera	444 S. Blount St., Ste. 101	617.1661	Mexican, Latin American	\$\$	L, D, Ln
74 Chris London's Backstage	428 S. Dawson St.	832.1608	American	\$	L, D
75 Subway	126 S. Salisbury St.	828.0009	Deli/Café	\$	B, L, D
76 Subway	220 E. Martin St.	828.9977	Deli/Café	\$	B, L, D

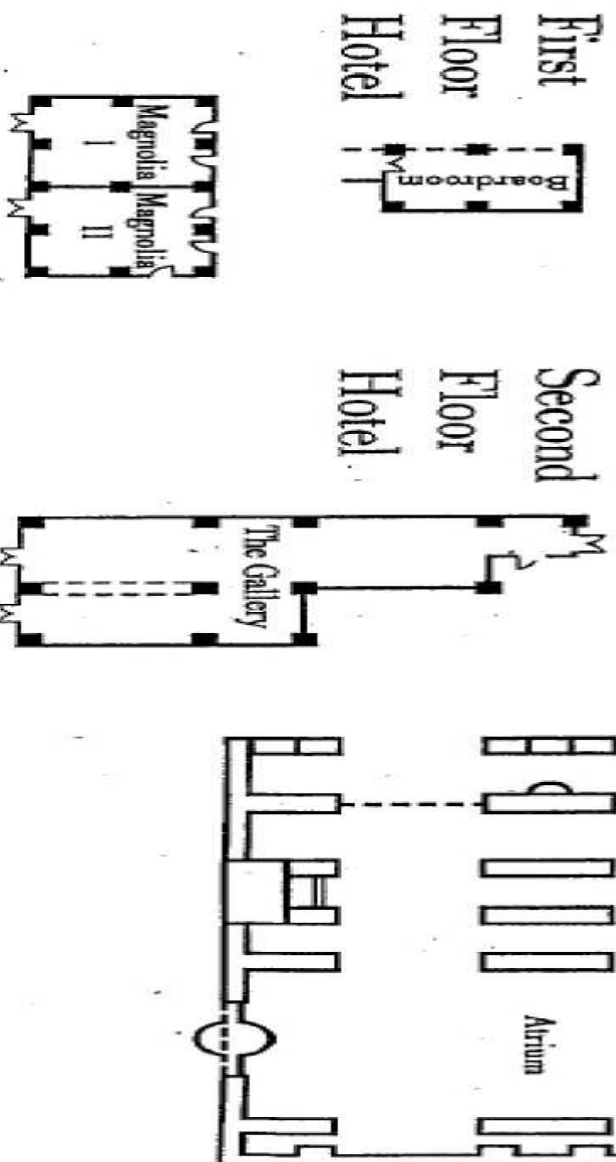
©2011 Greater Raleigh Convention and Visitors Bureau. Though every effort has been made to ensure accuracy, GRCVB cannot assume responsibility for errors or omissions. A skip in the numbering sequence indicates an opening or closing. Information current as of 06/06/11.

MAPS - Sheraton Laeght Hotel Floor Plan

Third Floor Hannover



Third Floor Hotel





2011 EHDI Partnering for Progress Agenda at a Glance IFSC/Pediatric Audiology Symposium/SE Regional EHDI Conference

Wednesday, October 26, 2011

1:00 PM – 4:00 PM	Pre-conference Session - EHDI: Grant Writing and Grant Review	Capital Room
3:00 PM – 5:00 PM	Student Session	Governor's I and II
4:00 PM	Registration/Exhibits Open	
5:00 PM	Welcome	Oak Forest Ballroom
5:15 PM	Opening Plenary – “Faces of Hearing Loss – Diversity of Parent Experiences”	Oak Forest Ballroom
6:30 PM – 7:00 PM	Meet and Greet with Exhibitors	Mezzanine
7:00 PM – 8:00 PM	Casual Dinner/Reception	Hannover Ballroom

Thursday, October 27, 2011

8:00 AM – 8:45 AM	Breakfast with Exhibitors	Mezzanine
8:45 AM – 9:30 AM	Plenary II – Linking Family-Centered Principles with Practices and Outcomes	Oak Forest Ballroom
9:35 AM – 10:20 AM	Plenary III – Comprehensive Assessment and Management of Congenital Hearing Loss: An Otologist's Perspective	Oak Forest Ballroom
10:20 AM – 10:35 AM	Refreshment Break	Mezzanine
10:35 AM – 11:20 AM	Breakout Sessions 1	Various Breakout Rooms
11:25 AM – 12:10 PM	Breakout Sessions 2	Various Breakout Rooms
12:10 PM – 1:15 PM	Lunch (Provided)	Mezzanine
1:15 PM – 2:00 PM	Breakout Sessions 3	Various Breakout Rooms
2:05 PM – 2:50 PM	Breakout Sessions 4	Various Breakout Rooms
2:50 PM – 3:05 PM	Refreshment Break with Exhibitors	Mezzanine
3:05 PM – 4:20 PM	Resource Exchange	Various Breakout Rooms
4:20 PM – 4:30 PM	Break	
4:30 PM – 5:15 PM	Plenary IV – Children Who are Hard of Hearing: A New Chapter	Oak Forest Ballroom

Friday, October 28, 2011

7:45 AM – 8:15 AM	Breakfast	Mezzanine
8:15 AM – 9:00 AM	Plenary V – When It's More Than Hearing,	Oak Forest Ballroom
9:00 AM – 9:10 AM	Break	
9:10 AM – 9:55 AM	Breakout Sessions 5	Various Breakout Rooms
9:55 AM – 10:05 AM	Refreshment Break	Mezzanine
10:05 AM – 10:50 AM	Breakout Sessions 6	Various Breakout Rooms
10:55 AM – 11:40 AM	Breakout Sessions 7	Various Breakout Rooms
11:40 AM – 1:00 PM	Lunch (on your own)	
1:00 PM – 1:45 PM	Breakout Sessions 8	Various Breakout Rooms
1:50 PM – 2:35 PM	Breakout Sessions 9	Various Breakout Rooms
2:35 PM – 2:45 PM	Refreshment Break	
2:45 PM – 3:30	Closing Plenary - Lessons Learned From 20 Years of Newborn Hearing Screening Programs	Oak Forest Ballroom